

Rumen Fermentation Enhancers



Improve profitability
with proper
rumen management.



ARM & HAMMER® Animal Nutrition Group
Innovative. Proven. Trusted.™

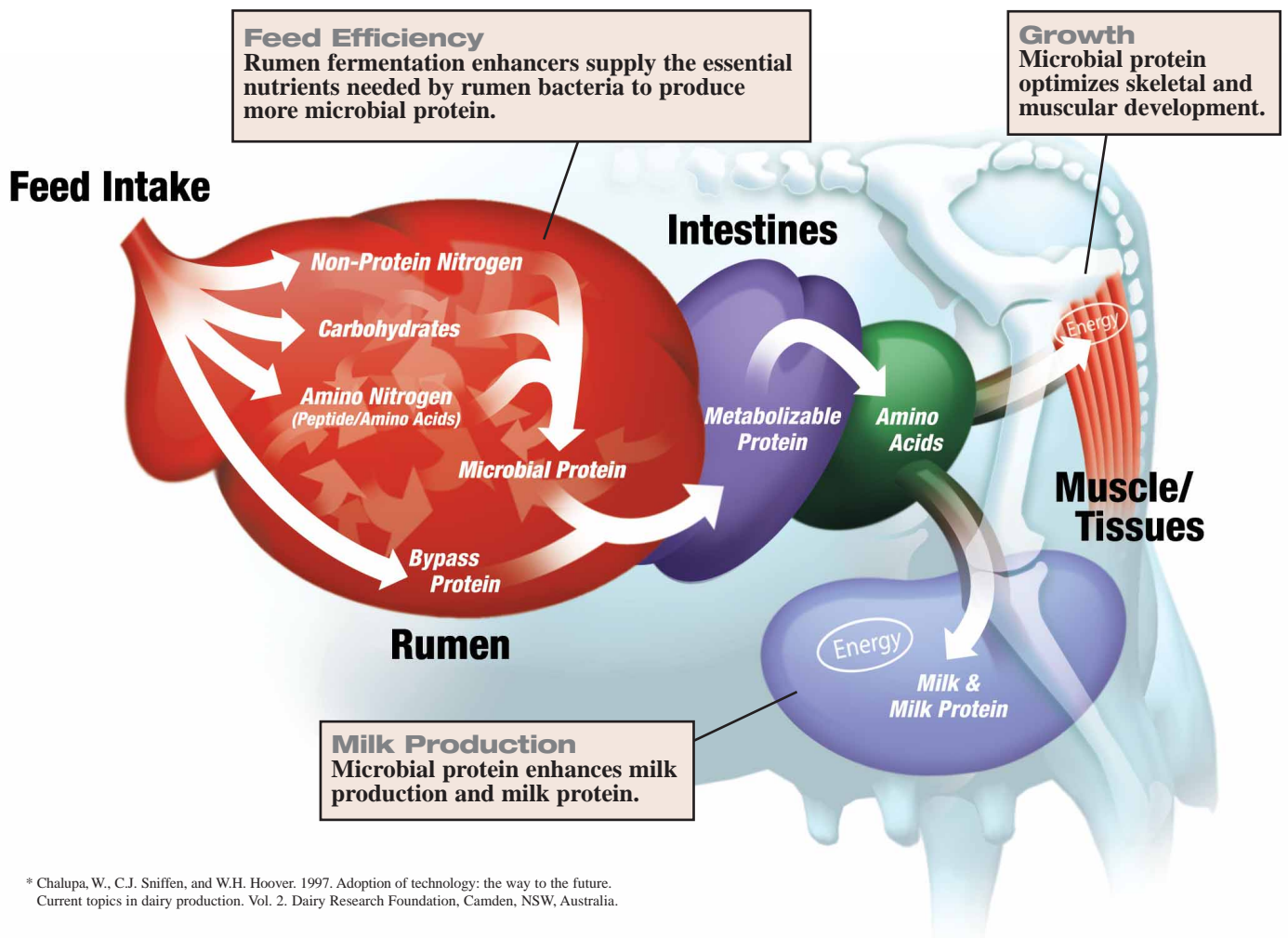
You can't run your operation well without proper management. A cow's rumen is no different.

The heart of a cow is her rumen. It's the center of all her functions, from growth to lactation to reproduction. If you're going to maximize her genetic potential, you'll have to manage the rumen well.

Providing the right nutrients creates an optimal environment that allows rumen microbes to function efficiently, giving cows the tools they need to convert feed into both milk and growth to enhance your profitability. And there's nothing better for enhancing an animal's potential for growth, milk production and feed efficiency. By supplying essential nutrients, ARM & HAMMER® Rumen Fermentation Enhancers allow 12 to 15 percent more microbial protein production.*

Throughout the entire lactation cycle, enhance rumen function with FERMENTEN® and BIO-CHLOR®.

Your nutrition advisor can supply the answer to your rumen efficiency challenges. Those answers should include two ingredients: FERMENTEN® Rumen Fermentation Enhancer, for heifers and lactating cows to enhance growth and productivity, and BIO-CHLOR® Rumen Fermentation Enhancer, in transition rations to maintain intake and optimize DCAD.



* Chalupa, W., C.J. Sniffen, and W.H. Hoover. 1997. Adoption of technology: the way to the future. Current topics in dairy production. Vol. 2. Dairy Research Foundation, Camden, NSW, Australia.



FERMENTEN gets heifers off to a great start and lactating cows to a profitable finish.

By supplying the right nutrients, FERMENTEN helps heifers reach breeding size faster. Once heifers are pregnant, FERMENTEN provides them with the proper nutrients to continue to grow and maintain their frame advantage through calving.

For heifers who need help catching up, FERMENTEN helps convert feed to growth. This allows them to grow to their genetic potential and enter the milking herd sooner.

In lactating cows, FERMENTEN promotes rumen microbial growth and helps increase the rumen output of high-quality microbial protein that can lead to improved milk production and milk protein.

BIO-CHLOR for transition rations.

BIO-CHLOR enhances rumen function to help maintain dry matter intake (DMI) while preparing pre-fresh cows for calving.

A typical dry cow ration is high in fiber and low in carbohydrates and energy. Conversely, the lactation ration is low in fiber and high in carbohydrates and energy. Fed three weeks prior to calving, BIO-CHLOR prepares the rumen microbes for the new ration, helping maintain dry matter intake and promote microbial efficiency and nutrient absorption.

In addition to conditioning rumen microbes, BIO-CHLOR prepares the cow for the metabolic stresses of calving. As an anion source, BIO-CHLOR helps achieve a negative dietary cation-anion difference (DCAD) by providing chloride in a safe, palatable form. This helps reduce the risk of metabolic disorders post-calving, especially milk fever.

Productive rumens lead to productive cows, and BIO-CHLOR and FERMENTEN Rumen Fermentation Enhancers feed the “bugs” that fuel your profits.

FERMENTEN

FEATURES

In heifers, allows for optimum skeletal and muscular development without over-fattening.

Heifers can devote more energy to productivity and profitability.

Allows desirable release of nutrients for optimum utilization by rumen bacteria.

BENEFITS

Larger animals at a younger age result in the potential for earlier breeding.

Helps smaller heifers ‘catch up’ through compensatory growth and grow to their genetic potential.

Helps lactating cows improve feed efficiency for increased milk production and milk protein.

BIO-CHLOR

FEATURES

Promotes rumen microbial efficiency and enhances rumen function.

Provides anions to promote negative DCAD by providing chloride in a safe, palatable form.

BENEFITS

Maintains DMI during the transition period and helps cows reach peak milk sooner.

Reduces the incidence of costly metabolic disorders, especially milk fever.

Call your ARM & HAMMER Animal Nutrition Group representative at (800) 526-3563 or visit www.ahdairy.com to learn more about innovative solutions for a productive rumen. We’ll work with you and your nutrition advisor to optimize rumen performance through all stages of lactation, with innovative products, proven performance and trusted solutions.

Product specifications and feeding recommendations.

FERMENTEN

Guaranteed Analysis (min):

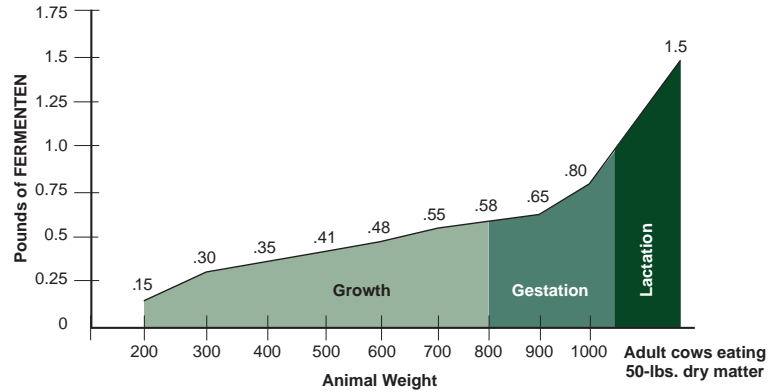
	As Fed
Crude Protein	43.0%
Crude Fiber	8.0%
Crude Fat	2.1%
NE _L	0.74 Mcal/lb

Feeding Recommendations

FERMENTEN should be fed as a protein source in both lactating cow and heifer diets. To maximize rumen fermentation, feed at a rate of 3% of dry matter intake.

For specific feeding recommendations, always consult with a nutrition advisor.

Feeding Recommendations:



BIO-CHLOR

Guaranteed Analysis (min):

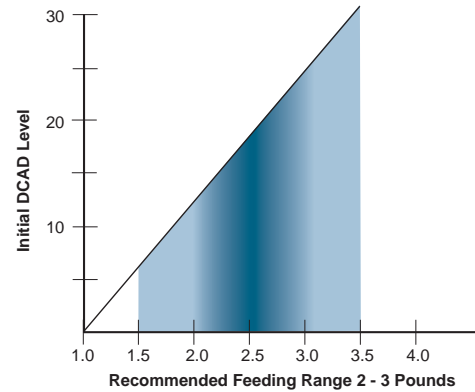
	As Fed
Crude Protein	43.0%
Crude Fiber	6.8%
Crude Fat	1.95%
Sulphur	2.04%
Chloride	7.31%
NE _L	0.69 Mcal/lb

Feeding Recommendations

BIO-CHLOR should be fed as the primary protein source in prepartum cow diets. Though feeding rates will vary based on the dietary cation content of the diet, amounts of 2.0 to 3.0 pounds per cow per day should provide sufficient anionic activity for DCAD balancing in most prepartum cow rations.

For specific feeding recommendations, always consult with a nutrition advisor.

Feeding Recommendations:



Ask for it by name.



ARM & HAMMER® Animal Nutrition Group
Innovative. Proven. Trusted.™

469 N. Harrison Street, Princeton, NJ 08543-5297
 800-526-3563
www.ahdairy.com